



A Minnesota  
Service  
Cooperative

# **PROFESSIONAL LEARNING CATALOG**

(CEU & BOSA Approved Courses)

**Winter / Spring 2024**

[www.brightworksmn.org](http://www.brightworksmn.org)

# Table of Contents

Artificial Intelligence	6
• Harnessing the Power of Artificial Intelligence in Education	6
Critical Thinking	7
• Critical Thinking for Any Subject	7
Equity & Cultural Competency	8
• Metro Area Equity Leaders	8
• An Evening of Art and Conversation - The Legacy of Hats from Africa to America: Souls of Women Folk & Revisiting Orwell	9
• Cultural Competency (PELSB Approved for 8 CEU's)	10
Inclusive Learning Environments	11
• Meant for More: Real Talk about Classrooms Built on Dignity, Authenticity and Connection	11
Leadership Development	12
• Principal Collegial Cohort 2023-24 School Year	12
• Principal Coaching	12
◦ Individual	12
◦ Small Group	13



# Table of Contents

Literacy/Science of Reading	14
• Leadership of Literacy	14
• Adolescent Literacy Solutions	15
• Reading Fundamentals Leader Institute	16
• Online Language & Literacy Academy (OL&LA)	17
• OL&LA Cohort Leader (OCL) Certification	18
• The Reading Center Dyslexia Institute of Minnesota	19
Multi-Tier Systems of Support (MTSS)	20
• MTSS Deconstructed: Moving from a Reactive Responsive to Proactive and Predictable Responses for ALL Students	20
Non-Exclusionary Practices	21
• Alternatives to Suspension and Exclusionary Discipline Practices: Impact of Limited Tolerance Policies and What to Do Instead	21
Paraprofessional Courses & Assessment	22
• ParaEducator Courses & Assessment	22
• ParaPro Assessment	23
Restorative Practices	24
• Elevating Student Voice through Caring & Committed Conversations	24
• Caring & Committed Conversations - Train the Trainer	25
• Restorative Relationships & Resources	26
• Introduction to Restorative Practice and Restorative Circles Training	27



# Table of Contents

---

## Student Centered Learning 28

- Universal Design for Learning: Improving Instruction through Student-Centered Learning Practices 28

---

## Student & Educator Wellness 29

- Live More, Screen Less: Digital Wellness in Schools 29
- Moving Beyond Burnout: The Continuum of Compassion Fatigue and How to Best Support Staff 30
- Reclaiming Resilience: Emotional Wellness and Resiliency for School Staff 31

---

## Trauma Responsive Practices 32

- Can't vs Won't, What Happened vs What's Wrong, Behavior vs Bid for Connection 32
- Adverse Childhood Experiences (ACE's) 2.0 33
- Creating Trauma Informed Student Support Plans, Classroom Management and Using Restorative Practices for Student Repair and Consequences 34
- Symptoms of Trauma and Mental Health Within the School Community 35
- Creating Psychologically Safe School Communities through Relationships, Connections, and Engagement with Students 35
- Resilient and Trauma Informed Systems & Culture of Support 36
- Trauma Informed Strategies Digest: At Your Site 37
- Starr Commonwealth: 10 Steps of Trauma Informed Resilient Schools 38
- The Catalyst Approach: Keeping them in the Classroom 39



# Table of Contents

---

Programs & Services 40

---

SparkPath 41

- 
- 2023-24 Field Trips 41
  - 2023-24 Academic Competitions 42
  - About SparkPath 43

**\*\* If you see a training that you would like to offer at your district, please contact Brittany Stepan at [brittany.stepan@brightworksmn.org](mailto:brittany.stepan@brightworksmn.org) \*\***



# Artificial Intelligence

## Harnessing the Power of Artificial Intelligence in Education

[Register Here for March 25](#)

[Register Here for June 17](#)

**Dates (Choose One):** March 25, 2024 **OR** June 17, 2024

**Time:** 8:00 AM - 3:00 PM

**Location:** BrightWorks, Bethel University - Anderson Center, 2 Pine Tree Drive, Arden Hills, MN, 55112 - Room ANC 125

**Facilitator:** John Fila ([Facilitator Bio](#))

**Audience:** Any teachers or administrators who are curious, fearful or excited about the prospect of using AI to facilitate their work.

**Tuition (includes lunch):**

- \$200/Person - BrightWorks Member
- \$240/Person - Standard Rate

**Description:**

Discover how AI can revolutionize the educational landscape and encourage educators to create more engaging and effective lessons.

As Artificial Intelligence (AI) is quickly being incorporated into all aspects of our lives, this workshop will guide how we should think of these tools, particularly generative AI like ChatGPT and Claude. During this workshop, we will discuss ways we should be thinking about AI.

- How it can help support our work and our learners;
- Saving time;
- Enable personalized learning;
- Supports for struggling learners;
- Assisting instructional design and lesson planning;
- Encouraging higher-order thinking skills;
- Assisting professional learning communities;
- Considerations for data privacy and equity;
- What to look out for when using AI as an assistant;
- Preparing for the future of AI in education.

The workshop provides participants with an AI implementation checklist for teachers and administrators as they begin their journey into this exciting new world! Participants will come away with the confidence to implement AI into their work, and plenty of knowledge to take back to their settings to continue the conversation with colleagues. Join us to discover how AI can revolutionize the educational landscape and empower educators to create more engaging and effective learning experiences.



# Critical Thinking

## Critical Thinking for Any Subject

### Register Here

**Date:** Weekly - Tuesdays, January 23 - March 26, 2024

**Time:** 4:00 PM - 5:15PM

**Location:** Synchronous via Zoom

**Audience:** Classroom Teachers K-12, Administrators

**Facilitator:** David LaPorte ([Facilitator Bio](#)), Professor Emeritus of Biochemistry, Molecular Biology & Biophysics at the University of Minnesota.

### **Tuition:**

- \$75/Person - BrightWorks Member
- \$100/Person - Standard Rate

### **Description:**

This training will help you incorporate critical thinking into courses that you already teach.

**Critical thinking** includes domain-general and subject specific skills. This course will emphasize the domain-general skills (e.g. evaluating claims using evidence and logic) since they are transferable. Subject specific skills will be considered when we examine examples, particularly in the case studies module. For example, besides the transferable skills, media literacy requires finding multiple independent sources and considering the motivations of the authors while scientific thinking requires experimental controls (e.g. placebos), sample size and randomization. (Note that these lists are not comprehensive.)

**Generative Artificial Intelligence** (e.g. ChatGPT) will be discussed. This technology is disrupting both the workplace and the classroom. While there are benefits and threats with this technology, a topic that hasn't received such attention are the negative consequences of students outsourcing their thinking to Large Language Models rather than practicing this skill themselves.

**The READ Act** requires teaching reading comprehension throughout preK-12. NAEP emphasizes the ability to draw inferences from complex text among the key Cognitive Goals for Reading. Inferences are claims supported by evidence using logic and reasoning, the very definition of basic critical thinking. Reading comprehension depends on background knowledge and vocabulary, three of the pillars of reading that evolve throughout a student's education and change continues for their entire lives.

## Equity & Cultural Competency

### Metro Area Equity Leaders

**Dates:** January 12, 2024, February 9, 2024, March 15, 2024, April 12, 2024, May 10, 2024, and June 21, 2024

**Time:** 9:30AM - 11:30AM

**Location:** All meetings are in person meetings and are hosted by various Metro Area School Districts. Please contact Chris Streiff Oji ([chris.streiff.oji@brightworksmn.org](mailto:chris.streiff.oji@brightworksmn.org)) or Brittany Stepan ([brittany.stepan@brightworksmn.org](mailto:brittany.stepan@brightworksmn.org)) for meeting locations.

**Facilitators:** Sam Ouk, ([Facilitator Bio](#)) Equity Director/Prior Lake-Savage Schools; Brenton Shavers, ([Facilitator Bio](#)) Equity Director/White Bear Lake Area Schools; Chris Streiff Oji, ([Facilitator Bio](#)) BrightWorks

**Audience:** Equity Directors, Equity Specialists and Coordinators, Administrators

**Tuition:**

- Free to All Metro Area Equity Leaders, Directors, Specialists, Coordinators, Administrators

**Description:** A place for Metro Area Equity Leaders to come together to network, collaborate and support one another around strategies to move Equity work forward through District Leadership and Educators for positive student outcomes. We will explore what is working and what is not working with regards to specific programming (i.e. Racial Harm Protocol, Restorative Practices, other topics requested by participants, etc.). Hold space for sharing concerns, vision, hope and healing.

**Learn More:** Please contact Brittany Stepan, [brittany.stepan@brightworksmn.org](mailto:brittany.stepan@brightworksmn.org) to be added to the Metro Equity Leaders mailing list for invites and announcements.





## Equity & Cultural Competency

### An Evening of Art and Conversation - The Legacy of Hats from Africa to America: Souls of Women Folk & Revisiting Orwell

[Register Here](#)

**Date:** March 12, 2023

**Time:** 5:30 PM - 7:30 PM

**Location:** Tipton-Hammond Arts, Gallery #261, Northrup King Building, 1500 Jackson Street, NE, Minneapolis, MN, 55413

**Facilitators:** Beverly Tipton Hammond ([Facilitator Bio](#)) & A Drew Hammond ([Facilitator Bio](#))

**Audience:** Teachers, School Administrators, School Support Staff, Equity Directors & Specialists.

**Tuition (includes light appetizers/refreshments):**

- \$125/Person - BrightWorks Member Rate
- \$150/Person - Standard Rate

**Description:**

In this art talk, Beverly Tipton Hammond shares the powerful historical connection between African Women's Head Dress and the hats worn today in the church by African American Women. The faith, the food, the music, and the arts are all entwined in the story. The struggle and oppression during the years of enslavement continues today, but as an undercurrent of disdain. How has fashion empowered women to mobilize for racial justice and how do we find healing for ravaged souls?

Visual Artist, A Drew Hammond leads an exploration of American art in comparison to three quotes by Author George Orwell (1903-1950). The comparison will explain the staunch marginalization of African Americans.



## Equity & Cultural Competency

### Cultural Competency (PELSB Approved for 8 CEU's)

[Register Here for the Online Asynchronous Course](#) (BOSA CEU Approved)

**Date:** Online Asynchronous Course

**Location:**

- Online Asynchronous Course - At your own pace

**Facilitator:** Chris Streiff Oji ([Facilitator Bio](#)), BrightWorks

**Audience:** Teachers and Administrators

**Registration Fee:**

- \$99/Person - Standard and Member Rate

**Description:** This course is designed to broaden our understanding of and effective interaction with people of cultures, native languages, and socioeconomic backgrounds that are different from our own. This Statewide learning course is a collaboration of the Minnesota Service Cooperatives. The objectives of this course is to promote self-reflection and discussion around topics of race, culture and socioeconomics; American Indian and Alaska Native; system racism; religion; sexual orientation; gender identity, including transgender students; language diversity; individuals with disabilities, including mental health concerns.

## Inclusive Learning Environments

### Meant for More: Real Talk about Classrooms Built on Dignity, Authenticity, and Connection

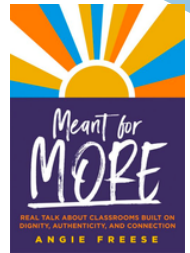
[Register Here](#)

**Dates:** January 25, 2024; February 20, 2024; April 18, 2024

**Time:** 9:00 AM - 3:00 PM

**Location:** BrightWorks, Bethel University - Anderson Center, 2 Pine Tree Drive, Arden Hills, MN, 55112 - Room ANC 125

**Facilitators:** Angie Freese ([Facilitator Bio](#)) & Joy Fredrickson ([Facilitator Bio](#))



#### Tuition (includes lunch):

- \$825/Person - BrightWorks Member
- \$990/Person - Standard Rate

#### Description:

Discover a team-oriented approach to reshaping classrooms into safe spaces where each student feels valued, inspired, and invested in their learning! During this three-day workshop, participants will experience a readiness framework for building a classroom/school community that honors the unique perspectives, experiences, assets, and needs of each learner. The workshop will engage participants with six essential elements for classrooms and schools that bring hope and dignity to each learner (authenticity, connection, curiosity, voice, resilience, and grace), and will also examine how to best prepare oneself, the team, and the students in order to craft a sustainable culture of belonging. Participants will leave each session equipped with practical strategies and tools that empower educators to create inclusive learning environments that close opportunity gaps and build skills and dispositions necessary for future success.

Participants will:

- Explore the six attributes and core tendencies that evolve within *Meant for More* classrooms
- Study the infrastructure needed to elevate each attribute within the learning environment
- Dignify and celebrate their individual strengths and assets as an educator
- Lean into their vulnerability regarding the barriers to district, school, and classroom success
- Use a continuum to monitor their comfort level with and progression through each *Meant for More* attribute
- Develop and practice methods for bringing student voice into the dialog around meaningful, relevant classroom instruction

The workshop will utilize a variety of strategies and methods that honor the evolving needs of adult learners.



## Leadership Development

### Principal Collegial Cohorts 2023-24 School Year

[Register Here](#) (BOSA CEU Approved)

**Dates (2nd Thursday Monthly):** February 8, 2024; April 11, 2024

**Time:** 11:00 AM - 12:30 PM

**Location:** Twin Cities 400 Tavern, 1300 Industrial Blvd, NE., Minneapolis, MN 55413

**Facilitator:** Chris Streiff Oji, BrightWorks. ([Facilitator Bio](#))

**Audience:** K-12 Principals and Assistant Principals

**Tuition:**

- \$200/Person - BrightWorks Member Rate (lunch purchased on own, if desired)
- \$240/Person - Standard Rate (lunch purchased on own, if desired)

**Description:** A space for Principals and Assistant Principals from around the Twin Cities Metro Area to connect with one another on a regular basis. We will brainstorm topics to discuss at each session for collaboration and dialogue with an action-oriented focus.

### Principal Coaching - Individual

(BOSA CEU Approved)

**Audience:** K-12 Principals and Assistant Principals who would like to take their leadership from Good to Great!

**Description:** Coaching can provide a critical pillar of support for Principals and Assistant Principals as they navigate the complex world of school leadership.

Sessions will focus on four key areas:

- Fostering a Healthy Culture & Climate
- Empowering Your People
- Optimizing Your Systems (MTSS)
- Equity Focused Leadership

We will analyze strengths and opportunities for improvement in these areas using data and a strategic focus. We will establish a Plan, Do, Study, Action plan to implement school improvement strategies and monitor progress toward your strategic goals.

Individual Coaching

**Tuition:**

- \$1,020/Person - BrightWorks Member Rate (12 sessions @ \$85 per session)
- \$1,260/Person - Standard Rate (12 sessions @ \$105 per session)

**Includes:**

- Trainings to be determined by participants

**Learn more and Register:** Contact Brittany Stepan at [brittany.stepan@brightworksmn.org](mailto:brittany.stepan@brightworksmn.org) or (612)638-1526



## Leadership Development

### Principal Coaching - Small Group

[Register Here](#) (BOSA CEU Approved)

**Dates:** January 25, 2024; February 22, 2024; March 21, 2024; April 18, 2024; May 16, 2024

**Time:** 10:00 AM - 11:00 AM

**Tuition:**

- \$560/Person - BrightWorks Member (8 sessions @ \$70 per session)
- \$720/Person - Standard Rate (8 sessions @ \$90 per session)

**Includes:**

- 1-hour group coaching sessions for 8 total sessions.
- Meeting dates: TBD with Participants. These can occur onsite or virtually.

### Principal Coaching - Testimonial

**Testimonial:** *“As a first-year principal, I am incredibly grateful to have Chris's coaching support. Not only does Chris openly share her depth of knowledge and numerous resources, she is also skilled in helping me take a step back from the fast-paced nature of the work each week to keep in perspective improving school culture, empowering staff, and strengthening systems. Chris's coaching support has helped me stay committed to interrupting a system that produces inequitable and predictable outcomes based on family of origin, racial background, and socioeconomic status. If you are a leader committed to student success and reimagining public schooling from a human-centered approach, I highly recommend Chris as a coach and thought partner. The work is not for the faint of heart, and it is not meant to be done alone.”* -Jennifer, Metro Area Principal



## Literacy / The Science of Reading

### Leadership of Literacy

[Register Here](#)

**Date (2-Day Training):** May 16 & May 17, 2024

**Time:** 8:30 AM - 4:30 PM

**Location:** BrightWorks, Bethel University-Anderson Center, 2 Pine Tree Drive, Arden Hills, MN 55112 - Room ANC 125



**Audience:** School principals, assistant principals, district leaders, site-based leadership teams in partnership with principals

**Tuition:**

- \$660/Person – BrightWorks Member
- \$800/Person – Standard Rate

**Description:**

Leadership for Literacy was developed by and for school district leaders. Framed through the lens of the principal, this two-day, in-person training introduces school and district leaders including directors, principals, assistant principals, and site-based leadership teams to the Science of Reading and how to create the systems to support the implementation of structured literacy. Upon completion of this training, school leaders take processes and tools back to their school sites to support the development of a 90-day action plan aimed at jump-starting the shifts necessary to implement Science-of-Reading-aligned literacy instruction.

This training can be a stand-alone professional learning opportunity, or it can be an introductory session to set the stage for school leaders to dig deeper into leading literacy through CORE's Reading Fundamentals Leader Institute and/or executive coaching.

**Objective:**

Develop a foundational working knowledge of the Science of Reading and how it can be implemented in a system through transformative instructional leadership.

Utilize a clear process with aligned tools to assess school wide literacy structures.

Identify leadership actions that build school wide professional capacity to remove barriers and increase opportunities for students to become successful readers and communicators.

Materials: Participant Resource Guide



## Literacy / The Science of Reading

### Adolescent Literacy Solutions

[Register Here](#)

**Date (4-Day Training):** May 13 -14, 2024 & May 28-29, 2024



**Time:** 3:00 PM - 4:30 PM

**Location:** Virtual

**Audience:** School principals, assistant principals, district leaders, site-based leadership teams in partnership with principals

**Tuition:**

- \$615/Person – BrightWorks Member
- \$740/Person – Standard Rate

**Description:**

This four-day course focuses on preparing educators to develop vocabulary knowledge for middle and high school students and teach comprehension strategies that work for both literary and informational text.

**Academic Literacy Series (2 days)**

- *Academic Vocabulary:* Participants learn and practice evidence-based methods to directly teach important content vocabulary, teach students to figure out unknown words using contextual and morphemic analysis skills, and engage in fun and stimulating activities that foster “word consciousness”
- *Comprehension Strategies and Text Structures:* Participants learn about current, validated research in comprehension instruction. They receive in-depth instruction in selected instructional techniques that have broad application in both narrative and informational text at all grade levels.

**Intensive Intervention Series (2 days)**

- *Science of Reading Overview and Decoding Instruction for Adolescents:* The topic covered in these sessions include an overview of the Science of Reading, basic linguistics, phonics with an emphasis on multisyllabic word instruction.
- *Fluency Development:* These sessions focus on instructional methods, based on the science of reading, for teaching students to become fluent readers and spotlights the relationship between fluency and comprehension. Highlights include specific techniques to increase time on text and promote rereading.





## Literacy / The Science of Reading

### Reading Fundamentals Leader Institute

#### **Register Here**

**Date:** April 2, 4, 9, 11, 16, 18, 23, 25, 30 and May 2, 7, 9, 14, 16, 21, 23

**Time:** 16 - 19 minute sessions

**Location:** Virtual

**Audience:** District administrators, Site administrators, Instructional coaches, and Leadership teams

#### **Tuition:**

- \$3850/Person – BrightWorks Member
- \$4620/Person – Standard Rate

#### **Description:**

The Reading Fundamentals Leader Institute combines CORE's Reading Fundamentals training and elements from CORE's Academic Leader Institute. This institute equips district administrators, site administrators, instructional coaches, and leadership teams with a solid understanding of science of reading and structured literacy and the issues for leadership focused on program implementation. Resources to support building and evaluating strong school systems along with key instructional "look-fors" are introduced through each session.

This series can be a follow up (step 2) from the Leadership for Literacy training above or can be a stand-alone option.

Each topic below represents a 90-minute session of learning which can be delivered virtually on a weekly, bi-weekly, or monthly basis. Or four sessions can be combined for a full-day of in-person learning. Our team can also help to customize the scope and sequence, or the number of topics covered to meet your needs and timeline.

#### **Participant Outcomes**

- Understand the Science of Reading and the components of effective reading instruction
- Understand key "look fors" for effective reading instruction
- Observe video model lessons and practice instructional strategies key to reading instruction
- Use effective tools and coaching techniques to improve reading outcomes
- Understand the leadership issues that impact program implementation
- Use data to identify what is working and who needs intervention
- Implement data team meetings as tools to support achievement growth
- Complete an on-going self-evaluation of components addressed during the training

**Materials:** *Teaching Reading Sourcesbook*, *Assessing Reading: Multiple Measures*, Participant Resource Guide and online access to 2 CORE instructional videos: *Blending Routines* and *Foundational Skills*.



CORE  
LEARNING





## Literacy / The Science of Reading

### Online Language & Literacy Academy (OL&LA)

#### [Register Here](#)

**\*\*For groups of 15 or more. Group has to be 15 or more to register\*\***



**Date:** Available on or after March 11, 2024

**Length:** 18 weeks

#### **Format:**

- 45 Asynchronous hours
- 3 one-hour CORE Facilitator-led virtual synchronous sessions

**Location:** Virtual

**Audience:** District administrators, Site administrators, Instructional coaches, and Leadership teams

#### **Tuition:**

- \$645/Person - BrightWorks Member
- \$774/Person - Standard Rate

#### **Description:**

CORE Learning's Online Language and Literacy Academy (OL&LA) is a nine-module online course grounded in the Science of Reading, Structured Literacy, and the acclaimed Teaching Reading Sourcebook. OL&LA equips educators to provide all students - with a special focus on multilingual students, dyslexic, and developing readers - with both research-based reading and second language acquisition instruction. This asynchronous course centers on inclusive learning principles.

OL&LA participants will gain the skills to deliver effective reading instruction and connect research to support their practice. They will also develop an understanding of the crucial role oral language development plays in reading instruction. Educators learn how to use diagnostic measures to guide instruction.



## Literacy / The Science of Reading

### OL&LA Cohort Leader (OCL) Certification

#### [Register Here](#)

**Date:** Available on or after March 11, 2024



**Length:** 8 weeks

#### **Format:**

- 50 Asynchronous hours
- Eight 90-minute CORE Facilitator-led virtual synchronous sessions
- 8 hours of independent practicum and reflection tasks

**Location:** Virtual

**Audience:** District administrators, Site administrators, Instructional coaches, and Leadership teams

#### **Tuition:**

- \$1850/Person - BrightWorks Member
- \$2220/Person - Standard Rate

#### **Description:**

OL&LA Cohort Leader (OCL) Certification, a specialized certification, is designed for customers preferring to use an in-district facilitator to guide their teachers through an OL&LA cohort and cultivate internal capacity for sustained professional development post-course completion. OCLs undergo comprehensive training to become experts in OL&LA topics, adept at facilitating discussions with asset-oriented language, and skilled in extending learning opportunities.

The OL&LA Cohort Leader (OCL) Certification is an intensive eight-week training program that equips participants with the knowledge and skills needed to lead OL&LA cohorts and foster continuous professional development within their districts. Participants attend eight virtual live 90-minute sessions led by CORE Learning facilitators and complete eight hours of independent practicum and reflection tasks. CORE Learning provides OCLs with an comprehensive playbook, guidance on effective facilitation, strategies for supporting extended online learning, an optional outline for extended professional development, and a robust FAQ response.



## Literacy / The Science of Reading

**The Reading Center Dyslexia Institute of Minnesota - Free Online Professional Development for MN Educators**

Thanks in part to financial support from the Carl and Verna Schmidt Foundation, professionals working in MN schools are eligible to access The Reading Center Dyslexia Institute of MN's online courses for free. These courses include Dyslexia 101, Dyslexia in the Classroom, and The Scoop on Suffixes with more to be added soon.

Click [here](#) to learn more and register!



**The Reading Center**  
DYSLEXIA INSTITUTE OF MN



## Multi-Tier Systems of Support (MTSS)

### MTSS Deconstructed: Moving from a Reactive Response to Proactive and Predictable Responses for ALL Students - At Your Site

**Date:** To Be Determined with Participating Districts

**Time:** Full day training

**Location:** Trainings will be held at your School/District Site

**Facilitator:** Chris Streiff Oji ([Facilitator Bio](#))

**Audience:** Preferably school teams: Administrator, School Psychologist, Social Worker, Behavior Intervention Specialists, MTSS Team Reps

**Tuition (includes lunch):**

- \$250/Person - BrightWorks Member Rate
- \$300/Person - Standard Rate

**Description:** This training will help you move from operating in crisis mode to proactive and predictable responses in meeting the needs of your students. These past few years have been disruptive, and many have been in reactive, rather than proactive mode. Through interactive and experiential group participation, we will work with you to:

- Revisit your current practices (tiers of intervention)
- What resources are in place?
- What processes do you have in place to move students from tier to tier?
- What data points do you have in place, or need to establish, to optimize your system?
- What barriers do you see for implementing operational processes?
- Develop an action plan prioritizing next steps.

For Schools or Districts interested in these full day trainings, please contact Brittany Stepan ([brittany.stepan@brightworksmn.org](mailto:brittany.stepan@brightworksmn.org)) or Chris Streiff Oji ([chris.streiff.oji@brightworksmn.org](mailto:chris.streiff.oji@brightworksmn.org))



## Non-Exclusionary Practices

### Alternatives to Suspension and Exclusionary Discipline Practices: Impact of Limited Tolerance Policies and What to do Instead

[Register Here](#) (BOSA CEU's Pending)

**Date:** February 21st, 2024

**Time:** 9:00 AM - 4:00 PM

**Location:** BrightWorks, Bethel University-Anderson Center, 2 Pine Tree Drive, Arden Hills, MN 55112 - Room ANC 125

**Facilitator:** Dr. Charlene Myklebust ([Facilitator Bio](#)), BrightWorks

**Audience:** Teachers and Administrators

**Tuition:**

- \$250 - BrightWorks Member Rate
- \$300 - Standard Rate

**Description:**

Research has shown that exclusionary discipline is associated with (NEA, 2018):

- Lower academic performance
- Lower levels of school engagement
- Greater chance of leaving school before graduating
- Increased likelihood of future involvement with the criminal justice system
- Higher levels of school violence and antisocial behavior

Actions have occurred at the Federal and State levels to reduce the use of suspensions and exclusionary discipline practices. In this workshop, we will seek to understand:

- History and evolution of zero and limited tolerance behavior policies
- Impact of suspension on students
- The phenomenon of the school-to-prison pipeline

Learn the most impactful, evidence-based alternatives to traditional exclusionary models:

SW-PBIS / Positive School Culture

Restorative Practices

SEL

Trauma-responsive and equity lenses

Strategies to avoid power struggles with students

Multiple practice interventions to replace suspensions, exclusionary practices, and in school arrests

Advancement Project - 25 recommendations for alternatives to suspension

Los Angeles Unified School District - Top Ten Alternatives to Suspension

Initiatives in Minnesota to transform punitive responses into opportunities to teach and mentor



## Paraprofessional Courses & Assessment

### ParaEducator Courses & Assessment

**Date & Time:** Offered at 9:00 AM & 1:00 PM on a daily basis, Tuesday-Friday

**Location:** In-person at BrightWorks - 2 Pine Tree Drive, Suite 101, Arden Hills, MN, 55112

**Audience:** Paraprofessionals

**Tuition:**

- \$59 for Courses ONLY
- \$79 for Courses & Assessment

**Description:** Paraprofessionals who assist with classroom instruction must meet state requirements beyond a High School diploma, or its equivalent. One option to satisfy this demand is passing the ParaEducator assessment, designed to fulfill requirements of the federally legislated No Child Left Behind Act of 2002, which measures the math, reading, and English skills of practicing or aspiring Paraprofessionals, as well as their ability to apply these skills and knowledge when assisting in a classroom setting.

To complete the assessment to be considered “highly qualified,” paraprofessionals complete the “highly qualified courses” and complete the proctored assessment in person at BrightWorks on their designated date and time. Assessments are completed on an in-person, individual basis, by appointment only.

Highly qualified prep courses are assigned to those wanting to take the assessment. The Title I courses are in the areas of Mathematics Skills, Reading Skills, Supporting Instruction and Writing Skills. It is estimated that the courses take 8-12 hours to complete. Content aligns with CEC standards for paraeducators and is endorsed by CASE.

**Learn more and register:**

Contact Angela Skrade at [angela.skrade@brightworksmn.org](mailto:angela.skrade@brightworksmn.org) or 612-638-1528



## Paraprofessional Courses & Assessment

### ParaPro Assessment

**Location:** In-person at BrightWorks- 2 Pine Tree Drive, Suite 101, Arden Hills, MN, 55112

**Audience:** Paraprofessionals

**Tuition:** \$85

**Description:** ParaPro Assessment Exam - Approved for use in Minnesota as a way for current or aspiring paraprofessionals to demonstrate competencies in reading, math, and writing as required under the No Child Left Behind Act of 2002.

Paraprofessionals who assist with classroom instruction must meet state requirements beyond a High School diploma, or its equivalent. One option to satisfy this demand is passing the ParaPro examination, an assessment designed to fulfill requirements of the federally legislated No Child Left Behind Act of 2002, which measures the math, reading, and English skills of practicing or aspiring Paraprofessionals, as well as their ability to apply these skills and knowledge when assisting in a classroom setting.

The ParaPro Assessment is a timed, computerized exam, consisting of 90 multiple-choice questions. The questions must be answered within a two and one-half hour time period, and scoring is scaled, based on 75 of the 90 questions. Minnesota requires a minimum score of 460 to pass the examination. Testing is offered at BrightWorks on a weekly basis, Tuesday- Friday, with both morning and afternoon appointment times available.

**Learn more and register:** Contact Angela Skrade at [angela.skrade@brightworksmn.org](mailto:angela.skrade@brightworksmn.org) or 612-638-1528



## Restorative Practices

### Elevating Student Voice Through Caring and Committed Conversations

**Register Here** (BOSA CEU Approved)

**Date:** March 18th, 2024

**Time:** 8:30 AM – 3:30 PM

**Location:** BrightWorks, Bethel University-Anderson Center, 2 Pine Tree Drive, Arden Hills, MN 55112 - Room ANC 125

**Facilitators:** Sarah Miller ([Facilitator Bio](#)) and Malik Peer ([Facilitator Bio](#)), Diversity Equity Outreach Consulting, LLC

**Audience:** Classroom Teachers K-12, Administrators, Directors, Social Workers, Behavior Intervention Specialists, Equity Specialists

**Tuition (includes lunch):**

- \$200/Person - BrightWorks Member
- \$250/Person – Standard Rate

**Description:** Caring & Committed Conversations (CCC) is a guided conversation process that empowers students to courageously use their voices to share their personal stories and thoughts pertaining to society and educational issues that explicitly and implicitly impact their lives. This training outlines the process used to establish a Caring and Committed Conversations Protocol in your schools.





## Restorative Practices

### Caring & Committed Conversations - Train the Trainer

**[Register Here](#)** (BOSA CEU's Pending)

**Date:** June 10th, 11th, & 12th, 2024

**Time:** 8:00 AM – 3:30 PM

**Location:** BrightWorks, Bethel University-Anderson Center, 2 Pine Tree Drive, Arden Hills, MN 55112 - Room ANC 125

**Facilitators:** Sarah Miller ([Facilitator Bio](#)) and Malik Peer ([Facilitator Bio](#)), Diversity Equity Outreach Consulting, LLC

**Audience:** Educators, Administrators, and Community Members who are interested in learning how to host CCC and desire to learn how to teach the process to others.

**Tuition:**

- \$1200/Person - BrightWorks Member
- \$1500/Person – Standard Rate

**Description:** Join Sarah and Malik on a 3 day training to learn how to teach others the process of hosting Caring and Connected/Compassionate/Committed Conversations. After the training, the participants will understand how to form a Diversity or Equity Leadership Group, prepare and host a conversation, and teach others how to engage in the conversation process that elevates students' voices so all students are seen, heard and represented in the school culture. "EveryONE Experiences, EveryONE's Experience"

What: CCC is a guided conversation process that empowers students to courageously use their voices in sharing their personal stories and thoughts about societal and educational issues that explicitly and implicitly impact their lives. Participating adults create a time and place for supporting positive relationships and communication skills-building.

Why: The conversations promote positive relationship-building, articulating student voice, and creating inclusive learning environments. During the process, everyone has the opportunity to be seen, heard, and represented. EveryONE gets to experience EveryONE's experience.

How: By partaking in these C.C.C.s, youth and adult participants engage in a communication model/process that fosters a sense of self and social awareness through self-expression. The students and staff who host C.C.C.s develop authentic connections that inspire unity through the progressive experience. During the 3 day training participants will:

Day 1: Learning the research and theory behind the conversation model

Day 2: Learning the vibe behind DLCjr/DLC/ELC leadership crew and steps to hosting a conversation

Day 3: Hosting conversations and teaching others the process



# Restorative Practices

## Restorative Relationships and Resources

[Register Here](#) (BOSA CEU Approved)

**Dates:** January 29, 2024, February 27, 2024, and March 3, 2024

**Time:** 9:00 AM - 3:00 PM

**Location:** BrightWorks, Bethel University-Anderson Center, 2 Pine Tree Drive, Arden Hills, MN 55112 - Room ANC 125

**Facilitators:** Sarah Miller ([Facilitator Bio](#)) and Malik Peer ([Facilitator Bio](#)), Diversity Equity Outreach Consulting, LLC

**Audience:** Classroom Teachers K-12, Administrators, Directors, Social Workers, Behavior Intervention Specialists, Equity Specialists

**Tuition:**

- \$300/Person - BrightWorks Member
- \$375/Person - Standard Rate

**Description:** Restorative Resources are designed to give educators the tools to create Restorative Relationships. Research has shown that when students and teachers experience authentic nurturing relationships, attendance improves, discipline becomes more equitable and less frequent, teacher satisfaction increases, and ultimately academic success becomes more likely. During this session participants will enhance their relationship building skills by understanding the theory behind restorative practices and learning how to implement proactive and restorative circles, affective statements and restorative questioning.

- **Day One: The Power of the Circle**

Participants will learn about the history, relevance, and power of using circles within the classroom and school settings. Everyone will engage in circles and learn how to effectively use academic and non academic circles to build a trusting learning community where all students feel a sense of belonging.

- **Day Two: Understanding the Psychological Foundation of Restorative Relationships**

Participants will spend time learning the foundational psychology in which restorative practices was built upon: the social discipline window, fair process, 9 Affects, the compass of shame, and the restorative continuum. Educators will be encouraged to be reflective and interactive during our time together.

- **Day Three: Implementing Restorative Resources**

During this training participants will be learning various resources available to repair harm when wrongdoing has occurred. We will also take a deeper dive into understanding sources of conflict and restorative ways to manage conflicts when they arise.



# Restorative Practices

## Introduction to Restorative Practice and Restorative Circles Training

[Register Here for January 23](#) (BOSA CEU Pending)

[Register Here for February 6](#)

[Register Here for February 8](#)

[Register Here for April 16](#)

[Register Here for May 14](#)

**Dates:** January 23, 2024 **OR** February 6, 2024 **OR** February 8, 2024 **OR** April 16, 2024 **OR** May 14, 2024

**Time:** 8:00 AM - 3:00 PM

**Location:** BrightWorks, Bethel University-Anderson Center, 2 Pine Tree Drive, Arden Hills, MN 55112 - Room ANC 125

**Facilitator:** Stephen Shepherd Jr ([Facilitator Bio](#))

**Tuition (includes lunch):**

- \$130/Person - BrightWorks Member
- \$160/Person - Standard Rate

**Description:** What are Restorative Practices and Restorative Circles?

All Humans are hardwired to connect. Just as we need food, shelter and clothing, human beings also need strong and meaningful relationships to thrive. Restorative Practices and Restorative Circles are a social science that examines how to strengthen relationships between individuals, build social connections, within communities and the workplace. Restorative Practice is a practice that informs strategies for creating community and repairing when there has been harm or conflict. Restorative Circles serve as a great tool for creating community. Also, for repairing when harm has been done, restoring relationships, and sustaining community.

Restorative Practices and Restorative Circles are being applied in the following settings:

- K-12 Schools/Districts and Higher Education
- Community Health
- Organizational Leadership and Organizations
- Criminal Justice
- Counseling and Social Work



## Student-Centered Learning

### Universal Design for Learning: Improving Instruction through Student-Centered Learning Practices

[Register Here](#)

**Dates:** February 7, 2024; March 6, 2024; April 24, 2024

**Time:** 9:00 AM - 3:00 PM

**Location:** BrightWorks, Bethel University - Anderson Center, 2 Pine Tree Drive, Arden Hills, MN, 55112 - Room ANC 125

**Facilitators:** Joy Fredrickson ([Facilitator Bio](#))

#### Tuition (includes lunch):

- \$425/Person - BrightWorks Member
- \$510/Person - Standard Rate

#### Description:

Develop the knowledge, skills, and capacity to improve and optimize teaching and learning for all through Universal Design for Learning! During this 3-day workshop, participants will experience a framework for designing inclusive education experiences and environments. The workshop will equip educators into teaching to diversity and identity as well as identifying and removing barriers to increase student access to learning. Participants will gain practical strategies to address learner variability and provide flexibility in the ways learners access material, engage with it, and show what they know through purposeful, proactive design of goals, assessments, methods, and materials.

Participants will:

- Understand the Universal Design for Learning (UDL) framework and guidelines to personalize learning and ensure that each student has access and opportunity to develop skills and achieve at high levels
- Cultivate a UDL mindset to transform practices
- Explore practical strategies and student-centered learning practices to address learner variability in how they are engaged in learning and motivated, perceive and comprehend information presented, navigate learning environments, and express what they know/can do
- Engage in lesson design to develop and practice methods for utilizing the UDL framework in the design of classroom environments and instruction

The workshop will utilize a variety of strategies and methods that honor the evolving needs of adult learners.



## Student & Educator Wellness

### Live More, Screen Less: Digital Wellness in Schools

**[Register Here](#)** (BOSA CEU's Pending)

**Dates:** February 22nd, 2024

**Time:** 9:00 AM - 3:00 PM

**Location:** BrightWorks, Bethel University-Anderson Center, 2 Pine Tree Drive, Arden Hills, MN 55112 - Room ANC125

**Facilitator:** Dr. Charlene Myklebust ([Facilitator Bio](#)), BrightWorks

**Audience:** Classroom Teachers K-12, Administrators, Directors, Social Workers, Behavior Intervention Specialists, Equity Specialists

**Tuition:**

- \$250/Person - BrightWorks Member
- \$300/Person - Standard Rate

**Description:**

Our program is designed to foster balanced, intentional, and effective use of technology in schools. This goal arose from deep concern for and with young people. Research in the digital arena reveals that screen misuse and overuse negatively affect five dimensions of well being: social, emotional, mental, physical, and cognitive; especially in the developing brain. We will examine the research about the outcomes of student dependence on their devices and how we can invite and promote students to the process of developing protocols for themselves and their schools. Part of this presentation will include video interviews with students willing to be vulnerable about their own attachment to social media and their devices. Participants will leave with a tool kit to begin forming and norming a new approach to converting digital dependence to digital wellness in educational settings.



## Student & Educator Wellness

### Moving Beyond Burnout: The Continuum of Compassion Fatigue and How to Best Support Staff

[Register Here](#) (BOSA CEU's Pending)

**Dates:** January 16th, 2024 & April 25th, 2024

**Time:** 9:00 AM - 4:00 PM

**Location:** BrightWorks, Bethel University-Anderson Center, 2 Pine Tree Drive, Arden Hills, MN 55112 - Room ANC125

**Facilitators:** Allie Taylor ([Facilitator Bio](#)) & Linnea Devine ([Facilitator Bio](#))

**Audience:** Classroom Teachers K-12, Administrators, Directors, Social Workers, Behavior Intervention Specialists, Equity Specialists

**Tuition:**

- \$220/Person - BrightWorks Member
- \$270/Person - Standard Rate

**Description:**

This 6-hour workshop will focus on defining compassion fatigue and what that means for people working in the helping profession. Language and practical strategies will be given to combat compassion fatigue as well as proactively prevent compassion fatigue. Together we will uncover and define secondary and vicarious trauma as well as gain understanding on how both impact our bodies, brains, and wellbeing.



## Student & Educator Wellness

### Reclaiming Resilience: Emotional Wellness and Resiliency for School Staff

**[Register Here for the Online Asynchronous Course](#)** (BOSA CEU Approved)

**Date & Time:** Self-paced module completion (estimated 12 hours total)

**Location:** Virtual

**Audience:** Teachers, Principals, Paraprofessionals, Other District Administrators, and Other Support Staff.

**Tuition:** \$300

**Description:** Emotional Wellness & Resiliency For School Staff Modules are intentional supports, education and action plans that have been specifically created for staff who are serving in the educational settings. These modules and content were based within The Phases of First Year Teaching by Ellen Moir in order to promote content specific for the unique experiences of educational staff. While these phases absolutely are applicable to a first-year teacher, we believe that it applies to all educators working with students in the education setting, every year. Teachers, Social Workers, Speech/Language Pathologists, Occupational Therapists, Paraprofessionals, Bus Drivers, Nutritional Staff, Custodial Staff, Etc. If you work inside of the walls of a school building these modules are for you.

The modules and content are meant to create a place for you to feel seen & heard through the challenges and joys of supporting the students & communities you serve. The hope is for you to feel like you are in conversation with us, a place to learn together and move through this critical profession with actionable steps to promote an environment that upholds the importance of wellness and resiliency of school staff. There are 22 video modules and action plans to support both school staff and leadership to share the responsibility of this important work and commitment to wellness & community.

Above all, know that you matter, we need you & we want to give you the support needed to keep our helpers helping in the school. It is an opportunity and responsibility of our school communities as a whole to provide space to cultivate space for resiliency and wellness.

If there is interest in further training on implementation of content within your school community that is available for an additional fee. Please contact **Allie Taylor** at [Allie.Taylor@brightworksmn.org](mailto:Allie.Taylor@brightworksmn.org)





## Trauma Responsive Practices

**Can't vs. Won't, What Happened vs. What's Wrong, Behavior vs. Bid for Connection**

[Register Here for AM Training](#)

[Register Here for PM Training](#)

**Date (AM and PM Trainings):** April 30, 2024

**Time:** 8:30 AM – 11:30 AM **OR** 12:30 PM - 3:30 PM

**Location:** BrightWorks, Bethel University-Anderson Center, 2 Pine Tree Drive, Arden Hills, MN 55112 - Room ANC 125

**Facilitators:** Linnea Devine ([Facilitator Bio](#)) & Allie Taylor ([Facilitator Bio](#))

**Audience:** Working Educators

**Tuition:**

- \$120/Person - BrightWorks Member
- \$150/Person – Standard Rate

**Description:**

This learning experience will explore the trauma brain and distinguish the difference between what trauma brains are able and unable to do when triggered by stress/trauma, as well as how in which we can use a trauma informed mindset shift to look at behaviors from students as a avenue of communication or bid for connection vs maladaptive negative behaviors.





## Trauma Responsive Practices

### Adverse Childhood Experiences (ACES) 2.0

[Register Here](#) (BOSA CEU Approved)

**Date:** February 23, 2024

**Time:** 9:00 AM – 4:00 PM

**Location:** BrightWorks, Bethel University-Anderson Center, 2 Pine Tree Drive, Arden Hills, MN 55112 - Room ANC125

**Facilitator:** Charlene Myklebust ([Facilitator Bio](#)), BrightWorks

**Audience:** Classroom Teachers, Administrators, Directors

**Tuition (includes lunch):**

- \$250/Person - BrightWorks Member
- \$300/Person – Standard Rate

**Description:** Dr. Myklebust will review what we have already learned about Adverse Childhood Experiences, including the essential aspects of their impact on neurobiological development and life outcomes. In this engaging and interactive professional development course, she will discuss information revealed through current research that points to the inclusion of newly identified adverse developmental experiences: exposure to systemic racism/discrimination (including polarized civil discourse) and the experience of living through a pandemic. There will be a focus on student resilience and educators' responsibility in nurturing it. Char will review evidence-based strategies to create and cultivate trauma-engaged schools and classrooms. Participants will have an opportunity to self-assess personal exposure to trauma. We will examine how adult traumas and resilience must be supported to enable educational environments to flourish.

Learning Outcomes:

- I can recognize 10 Adverse Childhood Experiences (ACEs) that predict poor social and health outcomes.
- I can identify newly emerging ACE's; exposure to pandemics and systemic racism/discrimination.
- I can explain how ACE's impact the neurobiology and mindset of children and adults.
- I can identify strategies that are trauma-responsive and that nurture well-being in students.
- I can explain resilience and my part in building these skills in students, including regulating myself.
- I will self-assess my own childhood exposure to trauma, preview a Resilience Module developed by BrightWorks staff, and develop a personal resilience plan.
- I will choose two trauma-responsive approaches that I will use with students in my classroom, office, or in common school areas at my next opportunity.



## Trauma Responsive Practices

### Creating Trauma Informed Student Support Plans, Classroom Management and Using Restorative Practices for Student Repair and Consequences

[Register Here for AM training](#)

[Register Here for PM training](#)

**Date (AM & PM trainings):** February 22, 2024

**Time:** 8:30 AM - 11:30 AM **OR** 12:30 PM - 3:30 PM

**Location:** BrightWorks - 2 Pine Tree Drive, Arden Hills, MN, 55112 - Community Room

**Facilitators:** Linnea Devine ([Facilitator Bio](#)) & Allie Taylor ([Facilitator Bio](#))

**Audience:** Working educators

**Tuition:**

- \$120/Person - BrightWorks Member
- \$150/Person - Standard Rate

**Description:**

Repair isn't always an "I'm sorry for . . .". This workshop will provide a trauma informed mindset to use repair strategies in various ways. This workshop will focus on utilizing Restorative Practices as both a mindset and active strategies to create a more inclusive and trauma centered approach. We will discuss the importance of repair for not only students but also educators. When, where, and how repair can look and outside of the box strategies to use with a student.



## Trauma Responsive Practices

### Symptoms of Trauma and Mental Health within the School Community

[Register Here for AM training](#)

[Register Here for PM training](#)

**Date (AM & PM trainings):** March 12th, 2024

**Time:** 8:30 AM - 11:30 AM **OR** 12:30 PM - 3:30 PM

**Location:** BrightWorks - 2 Pine Tree Drive, Arden Hills, MN, 55112 - Room ANC125

**Facilitators:** Linnea Devine ([Facilitator Bio](#)) & Allie Taylor ([Facilitator Bio](#))

**Audience:** Working educators

**Tuition:**

- \$120/Person - BrightWorks Member
- \$150/Person - Standard Rate

**Description:**

This learning experience will focus on 5 major types of trauma we experience within individuals, how it impacts the biology of our brain, practical strategies to move from the trauma brain, back into the thinking brain for effective education.

### Creating Psychologically Safe School Communities through Relationships, Connections, and Engagement with students

[Register Here for AM training](#)

[Register Here for PM training](#)

**Date (AM & PM trainings):** January 9th, 2024

**Time:** 8:30 AM - 11:30 AM **OR** 12:30 PM - 3:30 PM

**Location:** BrightWorks - 2 Pine Tree Drive, Arden Hills, MN, 55112 - Community Room

**Facilitators:** Linnea Devine ([Facilitator Bio](#)) & Allie Taylor ([Facilitator Bio](#))

**Audience:** Working educators

**Tuition:**

- \$120/Person - BrightWorks Member
- \$150/Person - Standard Rate

**Description:**

This learning will focus on understanding what psychologically safe school communities look and feel like for both students and adults, as well as effective strategies to engage within to enhance relationships and school culture in a resilient affirming way.



## Trauma Responsive Practices

### Resilient and Trauma Informed Systems & Culture of Support

[Register Here for February 29](#)

[Register Here for April 18](#)

**Dates (Choose one):** February 29, 2024 **OR** April 18, 2024.

**Time:** 9:00AM - 4:00PM

**Location:** BrightWorks - 2 Pine Tree Drive, Arden Hills, MN, 55112 - Room 301E

**Facilitators:** Linnea Devine ([Facilitator Bio](#)) & Allie Taylor ([Facilitator Bio](#)),  
BrightWorks

**Audience:** Working educators

**Tuition (includes lunch):**

- \$220/Person - BrightWorks Member
- \$270/Person - Standard Rate

**Description:**

This learning experience will be a hands-on and interactive workshop to deepen the understanding of how trauma and high stress impacts both students & educators ability to effectively engage in the school community. This unique approach will deliver mindsets and strategies for not only students, but for educators as well. It will provide proactive strategies such as impacts on neurobiology of the trauma brain, strategies to mitigate impact of stressed brains, resilience strategies/mindsets to increase effectiveness within the classroom, creating supportive school communities with a sense of psychological safety.



## Trauma Responsive Practices

### Trauma Informed Strategies Digest - At Your Site

**Date:** To Be Determined with Participating Districts

**Time:** Each Topic is a 2-hour Professional Learning Session

**Location:** Trainings will be held at your School/District Site

**Facilitators:** Dr. Charlene Myklebust, Psy.D; Linnea Devine, LICSW; Allie Taylor, M.Ed. ([Mental Health Team BIO and Credentials](#))

**Audience:** Classroom Teachers, Administrators, Directors

**Tuition:** For Schools or Districts interested in these personalized 2-hour Trauma Professional Learning experiences, please contact Allie Taylor at [allie.taylor@brightworksmn.org](mailto:allie.taylor@brightworksmn.org) or Bianca Virnig at [bianca.virnig@brightworksmn.org](mailto:bianca.virnig@brightworksmn.org) or 612-638-1512 for your personalized proposal/quote.

**Description (You may select one or all of these sessions based on your needs):**

1. Understanding the Brain, Trauma, and Resilience Foundational Skills
2. Support and Invest in staff - Reclaiming Resilience for School Staff
3. Social and Emotional Learning: The Research
4. Creating and Nurturing Relationships - How to Interpret the Language of Student Behavior (Kids do about as well as they can)
5. The Importance of Safety - How to Cultivate Safe Environments and Relationships
6. Using Art, Music, and Storytelling to Support Students Learning

For Schools or Districts interested in these personalized 2-hour Trauma Professional Learning experiences, please contact Allie Taylor @ [allie.taylor@brightworksmn.org](mailto:allie.taylor@brightworksmn.org) or Bianca Virnig at [bianca.virnig@brightworksmn.org](mailto:bianca.virnig@brightworksmn.org) or 612-638-1512.



## Trauma Responsive Practices

### Starr Commonwealth: 10 Steps of Trauma Informed Resilient Schools

[Register Here for January 30](#)

[Register Here for February 13](#)

[Register Here for March 19](#)

[Register Here for April 23](#)

[Register Here for May 21](#)

**Dates (Choose one):** January 30, 2024 **OR** February 13, 2024 **OR** March 19, 2024 **OR** April 23, 2024 **OR** May 21, 2024.

**Time:** 8:00AM - 4:00PM

**Location:** BrightWorks - 2 Pine Tree Drive, Arden Hills, MN, 55112 - Room ANC125

**Audience:** Teachers, Principals, Paraprofessionals, Other District Administrators, and Other Support Staff

**Tuition (includes lunch):**

- \$150/Person- BrightWorks Member
- \$187.50/Person - Standard Rate

**Description:**

Starr Certified Trauma and Resilience Trainer in Education (CTRT-E) will be facilitated by a multidisciplinary team composed of Mental Health Professionals, Nurses, and/or Licensed Teacher within Special Education with extensive background in Trauma Informed & Mental Health within the education setting all certified trainers in Trauma and Resilience Trainer in Education. The learning experience will focus on resilience with an emphasis on understanding how trauma impacts children and their school experience. It will provide proactive strategies such as fostering connections, prioritizing social and emotional skills, establishing safety, and promoting play. Detailed information and concrete actions will also be covered, and in a way that doesn't just answer the "why" but also the "how" to create the best classroom and school supports for traumatized students and the school professionals who serve them.

Provided Resources: "10 Steps" Activities Packet and, upon request, a Certificate of Completion and CTRS-E Badge



## Trauma Responsive Practices

### The Catalyst Approach: Keeping Them In The Classroom

[Register Here](#) (BOSA CEU Approved)

**Date:** January 9 & 10, 2024

**Time:** 8:30 AM – 3:30 PM

**Location:** BrightWorks, Bethel University-Anderson Center, 2 Pine Tree Drive, Arden Hills, MN 55112 - Room ANC125

**Facilitators:** Jacki Brickman ([Facilitator Bio](#)) & Nancy Burns ([Facilitator Bio](#)), The Catalyst Approach

**Audience:** Classroom Teachers, Administrators, Directors

**Tuition (includes lunch):**

- \$500.00/Person - BrightWorks Member
- \$625.00/Person – Standard Rate

**Description:** The concepts and strategies taught in Keeping Them in the Room help educators understand the ways adults can disrupt harmful practices while replacing them with new ones, that help students build self-esteem and reduce feelings of shame and anxiety that develop in students who often struggle to find success in school.

This course will allow you to:

- Identify and understand the unintentional impact many common strategies have on students who struggle to find success in school leading to them being misunderstood, marginalized, and misrepresented by the adults in a school.
- Understand the impact that understanding neurodivergence and neurotypical brain development can have on one's ability to support students
- Increase your empathy and compassion for students who are hard for you to understand
- Learn about the classroom conditions for supporting students who are most at risk of spending more time out of the classroom and “in the office”
- Manage your own interactions effectively when interacting with students

**Prerequisite:** Whole Group Classroom Leadership: The Foundational Skills (in the last 3 years) Bring your Whole Group Classroom Leadership Workbook with you to class.

Deadline to register is January 2, 2024.

**All registrations must be received in advance, no on-site registration will be available for this course.**





# 2023-2024 PROGRAMS & SERVICES

BrightWorks provides comprehensive service to districts and schools in the 7-county metro area. Resources for: Superintendents, Business Managers, Teaching & Learning Directors, Professional Development Coordinators, Principals, Teachers, Students, Special Education Leaders, Paraprofessionals, Facilities Directors, and Health Services Directors are outlined below.

## Administrative Services & Publications

- Annual Class Size Study
- Composite Calendar
- Cooperative Purchasing (satisfies Minnesota competing bidding requirements)
- Education Policy Development
- Mental Health Services for School Staff
- ParaPro and ParaEducator Testing
- Professional Development Catalog

## Special Education

### State-Initiated, Federally Funded Programs

- Early intervention strategies for children with disabilities
- Greater MN Launch Pad
- Minnesota School-Wide Positive Behavior Interventions & Supports
- Network developing, conferences, and cutting-edge staff training
- Professional development and technical assistance for staff in the low incidence areas of Special Education
- Special Education libraries (Judy Wolff Library, Zot DeafBlind Toy Lending Library)

### Health & Safety

- COVID-19 response and recovery resources
- Health equity
- Monthly safety meetings and professional development
- Management assistance services

### State-Initiated, Federally Funded Mental Health and Nursing Programs

- Network development, conferences, professional development
- Tailored mental health and nursing services

## Professional Development

- Elevating Student Voice
- Equity & Cultural Competency
- Leadership Development – Principal Coaching and Development
- Literacy Instruction Support (in partnership with MDE)
- Optimizing Systems – MTSS
- Paraprofessional Support
- Trauma Informed Practices



## Student Programs

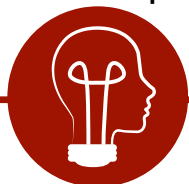
Conferences and competitions for students in grades 3-12

- CreativeCon
- Creativity Festival
- Future City Competition
- Knowledge Bowl
- Math Masters
- Spelling Bee
- STEMLink
- Young Authors Conference

\*BrightWorks members save 30%-50% on SparkPath student program registration fees.







### Creativity Festival

Grades 3-5

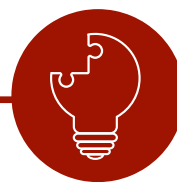
January 9-10, 2024

Ted Mann Concert Hall, U of MN

Aligns with Minnesota Academic Standards  
in Arts Education

Features:

- Opening performance
- Breakout sessions (led by visual/performing artists and STEM leaders) that promote curiosity, develop creativity, and strengthen problem-solving skills



### CreativeCon

Grades 5-8

January 11, 2024

Ted Mann Concert Hall, U of MN

Aligns with Minnesota Academic Standards  
in Arts Education

Features:

- Opening performance
- Breakout sessions (led by visual/performing artists and STEM leaders) that promote curiosity, develop creativity, and strengthen problem-solving skills



### STEMLink

Grades 5-6

Spring 2024

Hennepin Technical College  
Normandale Community College

Aligns with Minnesota Academic Standards  
in Science

Features:

- Keynote and breakout sessions led by college faculty and STEM professionals
- Students learn real-world applications of math and science



### Young Authors Conference

Grades 4-8

March 15 & May 28-31, 2024

Bethel University

Aligns with Minnesota Academic Standards  
in English Language Arts

Features:

- Keynote and breakout sessions led by local authors
- Students learn new strategies, ideas, and skills to become stronger writers

#### Rates per student:

BrightWorks Members\*: Early Bird - \$41 / Regular - \$43

Non-Members: Early Bird - \$55 / Regular - \$57

\*SparkPath presents its programs in collaboration with BrightWorks.

BrightWorks member districts/schools save 34% on registration fees.

Learn more about membership: [www.brightworksmn.org](http://www.brightworksmn.org)

# SparkPath

[www.sparkpath.org](http://www.sparkpath.org)



## Future City Competition Grades 6-8

**September 2023 - January 2024**

**Regional Competition  
January 20, 2024**

Dakota County Technical College

Rate per school:  
\$25

Aligns with Minnesota Academic Standards in Science, Math, Social Studies, and English Language Arts

## 2023-2024 ACADEMIC COMPETITIONS



## Middle Grades Knowledge Bowl

Grades 6-8

**November 2023 - February 2024**

Rates per team:  
\$150 (Members\*)  
\$300 (Non-Members)

Aligns with Minnesota Academic Standards in Science, Math, Social Studies, and English Language Arts



## Senior High Knowledge Bowl

Grades 9-12

**December 2023 - March 2024**

Rates per team:  
\$265 (Members\*)  
\$510 (Non-Members)  
Tiered discount with additional teams

Aligns with Minnesota Academic Standards in Science, Math, Social Studies, and English Language Arts



## Twin Cities Regional Spelling Bee

Grades 4-8

**March 7, 2024**

Fridley High School Auditorium

Rate per school:  
\$175 (through Scripps)

Regional Bee with top 50 spellers

Rate per speller:  
\$99 (Members\*)  
\$130 (Non-Members)

Aligns with Minnesota Academic Standards in English Language Arts

\*SparkPath presents its programs in collaboration with BrightWorks. BrightWorks member districts/schools save 30%-50% on registration fees.

Learn more about membership: [www.brightworksmn.org](http://www.brightworksmn.org)

BrightWorks  
A Minnesota Service Cooperative

# SparkPath

Formerly Success  
Beyond the Classroom

**OUR VISION:**  
Expand curiosity,  
confidence, and  
creativity in students

SparkPath is a 501(c)(3) non-profit organization created by BrightWorks, a Minnesota Service Cooperative, to provide student enrichment programs. BrightWorks member districts/schools save 30%-50% on SparkPath registration fees. Learn more about membership at [www.brightworksmn.org](http://www.brightworksmn.org).

## Engaging Field Trips

Opportunities to learn from and with Minnesota professionals in our local arts, writing, and STEM communities

**CreativeCon** - Grades 5-8

**Creativity Festival** - Grades 3-5

**STEMLink** - Grades 5-6

**Young Authors Conference** - Grades 4-8



## Exciting Academic Competitions

Challenging experiences that emphasize academic excellence, leadership, healthy competition, good sportsmanship, and effective communication

**Future City Competition** - Grades 6-8

**Math Masters** - Grades 5-6

**Middle Grades Knowledge Bowl** - Grades 6-8

**Senior High Knowledge Bowl** - Grades 9-12

**Twin Cities Regional Spelling Bee** - Grades 4-8



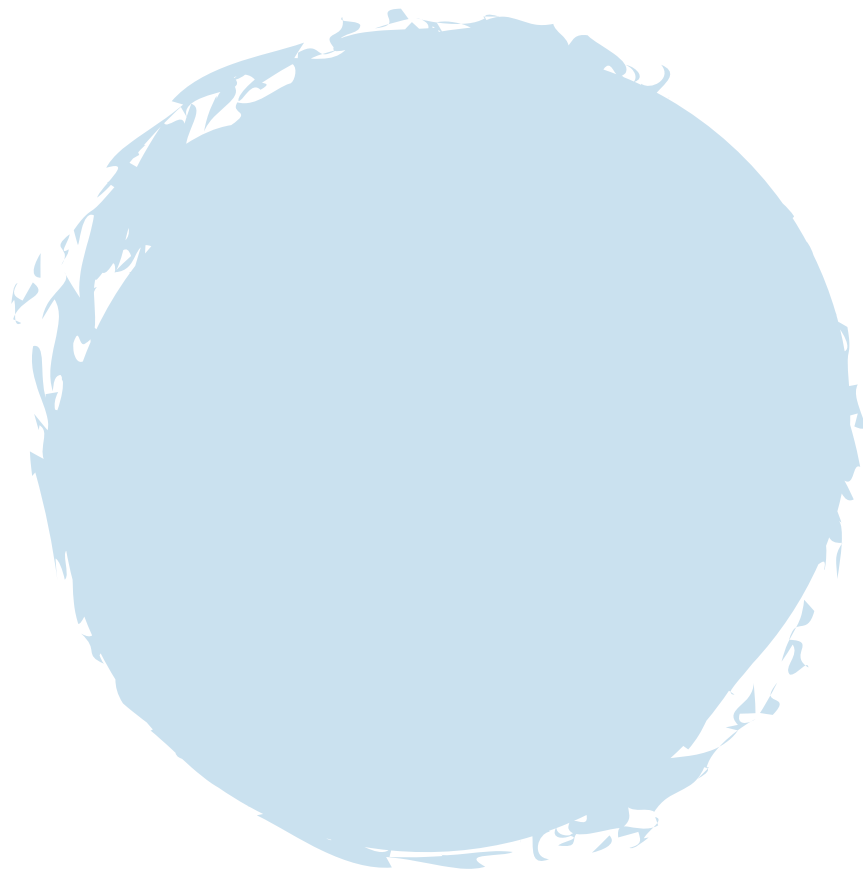
## Student & Teacher Testimonials

- With creativity, you can solve a lot more problems!
- At STEMLink, I learned that people can identify who you are by your teeth.
- The Young Authors Conference was awesome and now I want to be an author.
- I like the Knowledge Bowl meets because I get to learn new things, show off the knowledge I already have, hang out with friends, and meet some new people.
- It was fun to work together and build the Future City Competition model. It was really interesting to see it come together as a team.
- This was my first time attending CreativeCon and it was fantastic. My students kept telling me how great and fun the classes were.
- Thank you for your help and again for such a great Spelling Bee for the students. Although our student was disappointed to get out on the first round, she hopes to participate again next year.



2 Pine Tree Drive, Suite 101  
Arden Hills, MN 55112  
[www.sparkpath.org](http://www.sparkpath.org)  
612-638-1500

  
**BrightWorks**  
A Minnesota Service  
Cooperative



[www.brightworksmn.org](http://www.brightworksmn.org)