



A Minnesota  
Service  
Cooperative

# Professional Learning Catalog

(CEU & BOSA Approved Courses)

**Spring 2025**

[www.brightworksmn.org](http://www.brightworksmn.org)

# Table of Contents

Equity & Cultural Competency	4
• Metro Area Equity Leaders	4
• Cultural Competency (PELSB Approved for 8 CEU's)	5
School Culture & Climate	6
• Centering Equity in Social Emotional Learning	6
Leadership Development	7
• Discover Your Strengths with GALLUP Stengthsfinders	7
Literacy/Science of Reading	8
• Community of Practice: District Literacy Leads	8
• Community of Practice: Local Certified Facilitators	9
• Regional Literacy Networking - In-Person	10
• The Reading Center Dyslexia Institute of Minnesota	11



# Table of Contents

Mathematics	12
• Building Strong Math Classrooms: The 8 Effective Teaching Practices	12
• Supporting 2022 Math Standards Implementation	13
Paraprofessional Courses & Assessment	14
• ParaEducator Courses & Assessment	14
• ParaPro Assessment	15
Programs & Services	16
SparkPath	17
• 2024-25 Field Trips	17
• 2024-25 Academic Competitions	18
• About SparkPath	19

**\*\* If you see a training that you would like to offer at your district, please contact Brittany Stepan at [brittany.stepan@brightworksmn.org](mailto:brittany.stepan@brightworksmn.org) \*\***



# Equity & Cultural Competency

## Metro Area Equity Leaders

**Dates:** April 11, 2025, May 9, 2025

**Time:** 9:30AM - 11:30AM

**Location:** All meetings are in person meetings and are hosted by various Metro Area School Districts. Please contact Brittany Stepan ([brittany.stepan@brightworksmn.org](mailto:brittany.stepan@brightworksmn.org)) for meeting locations.

**Facilitators:** Derek Francis, ([Facilitator Bio](#)), BrightWorks; Lydia Jimenez - Lindsoe ([Facilitator Bio](#)), BrightWorks

**Collaborators:** Sam Ouk, ([Facilitator Bio](#)) Equity Director/Prior Lake-Savage Schools; Brenton Shavers, ([Facilitator Bio](#)) Equity Director/White Bear Lake Area Schools; Chris Streiff Oji, ([Facilitator Bio](#)) BrightWorks

**Audience:** Equity Directors, Equity Specialists and Coordinators, Administrators

**Tuition:**

- Free to All Metro Area Equity Leaders, Directors, Specialists, Coordinators, Administrators

**Description:**

A place for Metro Area Equity Leaders to come together to network, collaborate and support one another around strategies to move Equity work forward through District Leadership and Educators for positive student outcomes. We will explore what is working and what is not working with regards to specific programming (i.e. Racial Harm Protocol, Restorative Practices, other topics requested by participants, etc.). Hold space for sharing concerns, vision, hope and healing.

**Learn More:** Please contact Brittany Stepan, [brittany.stepan@brightworksmn.org](mailto:brittany.stepan@brightworksmn.org) to be added to the Metro Equity Leaders mailing list for invites and announcements.



## Equity & Cultural Competency

### **Cultural Competency (PELSB Approved for 8 CEU's)**

**Register for the Online Asynchronous Course** (BOSA CEU Approved)

**Date:** Online Asynchronous Course

**Location:**

- Online Asynchronous Course - At your own pace

**Audience:** Teachers and Administrators

**Registration Fee:**

- \$99/Person - Standard and Member Rate

**Description:**

This course is designed to broaden our understanding of and effective interaction with people of cultures, native languages, and socioeconomic backgrounds that are different from our own. This Statewide learning course is a collaboration of the Minnesota Service Cooperatives. The objectives of this course is to promote self-reflection and discussion around topics of race, culture and socioeconomics; American Indian and Alaska Native; system racism; religion; sexual orientation; gender identity, including transgender students; language diversity; individuals with disabilities, including mental health concerns.



## School Culture & Climate

### Regional Culture & Climate Networking

[Register for Regional Culture & Climate Networking - February 19](#)

[Register for Regional Culture & Climate Networking - March 19](#)

[Register for Regional Culture & Climate Networking - April 16](#)

[Register for Regional Culture & Climate Networking - May 21](#)

**Dates:** February 19, 2025, March 19, 2025, April 16, 2025, May 21, 2025

**Time:** 9:30AM - 11:00AM

**Location:** BrightWorks, Bethel University - Anderson Center, 2 Pine Tree Drive, Arden Hills, MN, 55112 - Room ANC125

**Facilitator:** Cristin Craig ([Facilitator Bio](#)), Culturally Responsive Instructional Leadership Regional Lead, BrightWorks

**Tuition:** Free (Tuition covered by statewide COMPASS funding)

**Audience:** School Leadership Team (SLT) membership: The school leadership team should consist of staff responsible for behavioral health, general education, special education and school administration (e.g., assistant principal, deans and the school principal). Content specialists and school district staff responsible for programs such as PBIS and services for multilingual learners, grants and curriculum review should attend as needed to ensure clear communication and support effective problem-solving and decision-making.

**Description:**

COMPASS Culture & Climate Regional Networking events are an opportunity for building and district leaders to connect with one another. We will have a quick 20 minute 'PD Pop' and spend time sharing about what school culture and climate successes and challenges leaders are experiencing in the Metro Area.



# Leadership Development

## Discover Your Strengths with GALLUP Strengthsfinders

**Date:** Dates and times will be determined with participating individuals/groups. Meetings will be in-person, virtual, or a combination of both depending on the needs of the individual/group.

**Facilitator:** Chris Streiff Oji ([Facilitator Bio](#)), GALLUP Strengths Certified Coach, BrightWorks

**Tuition:**

- \$4,500 - Full-day Professional Development
- \$3,000 - Half-day Professional Development
- Individual Coaching - quoted based on specific needs

**Description:**

Five things to know about CliftonStrengths

1. Extensive research foundation: CliftonStrengths is grounded in more than five decades of rigorous research, providing a robust foundation for its methodologies.
2. Talent measurement: It measures the presence of talent in 34 broad areas or themes, offering a comprehensive view of an individual's strengths.
3. Talent development: Designed to help individuals transform their innate talents into strengths, CliftonStrengths equips you with the tools to maximize your potential.
4. Common language: It provides a shared language to discuss and understand talents, fostering better communication and collaboration.
5. Unique contributions: It helps individuals identify and leverage their unique contributions, enhancing personal and professional growth.

Every individual has instinctive ways of behaving that differentiate them and enable diverse contributions. Recognizing and harnessing your talents empowers you to succeed by doing what you naturally excel at. Talent is defined as a naturally recurring pattern of thought, feeling, or behavior that can be productively applied.

Our talents are intrinsic to who we are. They:

- Describe our unique characteristics.
- Influence our choices.
- Guide our actions.
- Clarify why we excel in certain areas more than others.
- Shape our perception of the world.

**Learn more and Register:** Contact Brittany Stepan at [brittany.stepan@brightworksmn.org](mailto:brittany.stepan@brightworksmn.org) or (612)638-1526.



## Literacy / The Science of Reading

### Community of Practice: District Literacy Leads

#### Register for Community of Practice: District Literacy Leads

**Dates:** February 19, 2025, March 19, 2025, April 16, 2025, May 21, 2025, June 11, 2025

**Time:** 1:00PM - 3:00PM

**Location:** Virtual

**Facilitators:** COMPASS Literacy Team

**Tuition:** Free (Tuition covered by statewide COMPASS funding)

**Audience:** District Literacy Leads

#### **Description:**

A forum for members to discuss, problem solve, share information, and build relationships around their common role. With the guidance from the Regional Literacy Networks, participants will engage in professional development that will support the Local Certified Facilitators in supporting their district in achieving the goals of the MN READ Act.





## Literacy / The Science of Reading

### Community of Practice: Local Certified Facilitators

[Register for Community of Practice: Local Certified Facilitators - AM](#)

[Register for Community of Practice: Local Certified Facilitators - PM](#)

**Dates:** February 5, 2025, March 5, 2025, April 2, 2025, May 7, 2025, June 4, 2025

**Times (Choose one):** 8:00AM - 10:00AM **OR** 1:00PM - 3:00PM

**Location:** Virtual

**Facilitators:** COMPASS Literacy Team

**Tuition:** Free (Tuition covered by statewide COMPASS funding)

**Audience:** Local Certified Facilitators

**Description:**

A forum for members to discuss, problem solve, share information, and build relationships around their common role. With the guidance from the Regional Literacy Networks, participants will engage in professional development that will support the Local Certified Facilitators in supporting their district in achieving the goals of the MN READ Act.

## Literacy / The Science of Reading

### Regional Literacy Networking - In-Person

[Register for Regional Literacy Networking - February 26](#)

[Register for Regional Literacy Networking - March 26](#)

[Register for Regional Literacy Networking - April 23](#)

[Register for Regional Literacy Networking - May 28](#)

**Dates:** February 26, 2025, March 26, 2025, April 23, 2025, May 28, 2025

**Time:** 12:30PM - 3:30PM

**Location:** BrightWorks, Bethel University - Anderson Center, 2 Pine Tree Drive, Arden Hills, MN, 55112 - Room ANC125

**Facilitators:** COMPASS Literacy Team

**Tuition:** Free (Tuition covered by statewide COMPASS funding)

**Audience:** Local Certified Facilitators

**Description:**

A in person networking event for district literacy leads.



## Literacy / The Science of Reading

### The Reading Center Dyslexia Institute of Minnesota - Free Online Professional Development for MN Educators

Thanks in part to financial support from the Carl and Verna Schmidt Foundation, professionals working in MN schools are eligible to access The Reading Center Dyslexia Institute of MN's online courses for free. These courses include Dyslexia 101, Dyslexia in the Classroom, and The Scoop on Suffixes with more to be added soon.

Click [here](#) to learn more and register!



**The Reading Center**  
DYSLEXIA INSTITUTE OF MN



# Mathematics

## Building Strong Math Classrooms: The 8 Effective Teaching Practices

**Register for Building Strong Math Classrooms** (Teacher CEU's Available)

**Date:** February 26, 2025

**Time:** 12:00PM - 1:30PM

**Location:** Virtual

**Facilitators:** Kim Baartman ([Facilitator Bio](#)) & Sarah Moffett ([Facilitator Bio](#)),  
COMPASS Math Team

**Tuition:** Free (Tuition covered by statewide COMPASS funding)

**Audience:** District & Site Administrators, Instructional Coaches, Curriculum Directors

**Description:**

To change the outcomes in mathematics, we must first rethink our approach. This overview session, designed for District & Site Administrators, Curriculum Directors, and Instructional Coaches, introduces the \* *Effective Math Teaching Practices* as a foundation for shifting the perception of math in our schools. Participants will have an opportunity to reflect on their current teaching practices in their systems, explore an overview of the 8 Effective Teaching Practices, and begin selecting a focus area to promote deeper understanding, meaningful engagement, and equity in math education. Together, let's reimagine what's possible and create a path to better results for every learner!

# Mathematics

## Supporting 2022 Math Standards Implementation

**Register for Supporting 2022 Math Standards Implementation** (Teacher CEU's Available)

**Date:** March 5, 2025

**Time:** 10:00AM - 12:00PM

**Location:** Virtual

**Facilitators:** Kim Baartman ([Facilitator Bio](#)) & Sarah Moffett ([Facilitator Bio](#)), COMPASS Math Team

**Tuition:** Free (Tuition covered by statewide COMPASS funding)

**Audience:** District & Site Administrators, Instructional Coaches, Curriculum Directors

**Description:**

The 2022 Math Standards are set to be fully implemented in the 2027-28 school year! This session will support leaders in the implementation of the standards with practical action steps that can begin to be taken now to support staff in the transition. Participants will gain a deeper understanding of the standards implementation timeline, Evidence Based Practices, and the Standards for Mathematical Practice.

\*\*This session is a repeat of the sessions held on November 13, January 14, and January 15\*\*

## Paraprofessional Courses & Assessment

### ParaEducator Courses & Assessment

**Date & Time:** Offered at 9:00 AM & 1:00 PM on a daily basis, Tuesday-Friday

**Location:** In-person at BrightWorks - 2 Pine Tree Drive, Suite 101, Arden Hills, MN, 55112

**Audience:** Paraprofessionals

**Tuition:**

- \$59 for Courses ONLY
- \$79 for Courses & Assessment

**Description:** Paraprofessionals who assist with classroom instruction must meet state requirements beyond a High School diploma, or its equivalent. One option to satisfy this demand is passing the ParaEducator assessment, designed to fulfill requirements of the federally legislated No Child Left Behind Act of 2002, which measures the math, reading, and English skills of practicing or aspiring Paraprofessionals, as well as their ability to apply these skills and knowledge when assisting in a classroom setting.

To complete the assessment to be considered “highly qualified,” paraprofessionals complete the “highly qualified courses” and complete the proctored assessment in person at BrightWorks on their designated date and time. Assessments are completed on an in-person, individual basis, by appointment only.

Highly qualified prep courses are assigned to those wanting to take the assessment. The Title I courses are in the areas of Mathematics Skills, Reading Skills, Supporting Instruction and Writing Skills. It is estimated that the courses take 8-12 hours to complete. Content aligns with CEC standards for paraeducators and is endorsed by CASE.

**Learn more and register:**

Contact Angela Skrade at [angela.skrade@brightworksmn.org](mailto:angela.skrade@brightworksmn.org) or 612-638-1528



## Paraprofessional Courses & Assessment

### ParaPro Assessment

**Location:** In-person at BrightWorks- 2 Pine Tree Drive, Suite 101, Arden Hills, MN, 55112

**Audience:** Paraprofessionals

**Tuition:** \$85

**Description:** ParaPro Assessment Exam - Approved for use in Minnesota as a way for current or aspiring paraprofessionals to demonstrate competencies in reading, math, and writing as required under the No Child Left Behind Act of 2002.

Paraprofessionals who assist with classroom instruction must meet state requirements beyond a High School diploma, or its equivalent. One option to satisfy this demand is passing the ParaPro examination, an assessment designed to fulfill requirements of the federally legislated No Child Left Behind Act of 2002, which measures the math, reading, and English skills of practicing or aspiring Paraprofessionals, as well as their ability to apply these skills and knowledge when assisting in a classroom setting. The ParaPro Assessment is a timed, computerized exam, consisting of 90 multiple-choice questions. The questions must be answered within a two and one-half hour time period, and scoring is scaled, based on 75 of the 90 questions. Minnesota requires a minimum score of 460 to pass the examination. Testing is offered at BrightWorks on a weekly basis, Tuesday- Friday, with both morning and afternoon appointment times available.

**Learn more and register:** Contact Angela Skrade at [angela.skrade@brightworksmn.org](mailto:angela.skrade@brightworksmn.org) or 612-638-1528



BrightWorks provides comprehensive service to districts and schools in the 7-county metro area. Resources for: Superintendents, Business Managers, Teaching & Learning Directors, Professional Development Coordinators, Principals, Teachers, Students, Special Education Leaders, Paraprofessionals, Facilities Directors, and Health Services Directors are outlined below.

### Administrative Services & Publications

- Annual Class Size Study
- Composite Calendar
- Cooperative Purchasing (satisfies Minnesota competing bidding requirements)
- Education Policy Development
- Mental Health Services for School Staff
- ParaPro and ParaEducator Testing
- Professional Development Catalog

### Special Education

#### State-Initiated, Federally Funded Programs

- Early intervention strategies for children with disabilities
- Greater MN Launch PAD
- Minnesota School-Wide Positive Behavior Interventions & Supports
- Network developing, conferences, and cutting-edge staff training
- Professional development and technical assistance for staff in the low incidence areas of Special Education
- Special Education libraries (Judy Wolff Library, Zot Artz Library, DeafBlind Toy Lending Library)



### Professional Development

Our Collaborative Minnesota Partnerships to Advance Student Success (COMPASS) team will support schools in the following areas:

- Leadership Development
- Literacy Instruction & Support
- Math Instruction & Support
- Minnesota Multi-Tiered Systems of Support (MnMTSS)
- Equity & Cultural Competency
- Culturally Responsive Instructional Leadership
- Healthy Culture & Climate

### Health & Safety

- Professional development
- Building management assistance services

### Student Programs

Conferences and competitions for students in grades 3-12

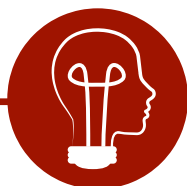
- CreativeCon
- Creativity Festival
- Future City Competition
- Knowledge Bowl
- Minnesota Braille Challenge
- Spelling Bee
- STEMLink
- Young Authors Conference

\*BrightWorks members save 30%-50% on SparkPath student program registration fees.




2 Pine Tree Drive, Suite 101  
Arden Hills, MN 55112  
www.brightworksmn.org  
612-638-1500





### **Creativity Festival**

Grades 3-5

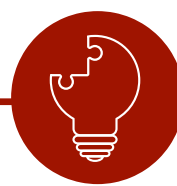
**January 7-8, 2025**

Ted Mann Concert Hall, U of MN

Aligns with Minnesota Academic Standards  
in Arts Education

Features:

- Opening performance
- Breakout sessions (led by visual/performing artists and STEM leaders) that promote curiosity, develop creativity, and strengthen problem-solving skills



### **CreativeCon**

Grades 5-8

**January 9, 2025**

Ted Mann Concert Hall, U of MN

Aligns with Minnesota Academic Standards  
in Arts Education

Features:

- Opening performance
- Breakout sessions (led by visual/performing artists and STEM leaders) that promote curiosity, develop creativity, and strengthen problem-solving skills



### **STEMLink**

Grades 5-6

**Spring 2025**

Aligns with Minnesota Academic Standards  
in Science

Features:

- Keynote and breakout sessions led by college faculty and STEM professionals
- Students learn real-world applications of math and science



### **Young Authors Conference**

Grades 4-8

**March 14 & May 27-29, 2025**

Bethel University

Aligns with Minnesota Academic Standards  
in English Language Arts

Features:

- Keynote and breakout sessions led by local authors
- Students learn new strategies, ideas, and skills to become stronger writers

#### **Rates per student:**

BrightWorks Members\*: Early Bird - \$41 / Regular - \$43

Non-Members: Early Bird - \$55 / Regular - \$57

\*SparkPath presents its programs in collaboration with BrightWorks.

BrightWorks member districts/schools save 34% on registration fees.

Learn more about membership: [www.brightworksmn.org](http://www.brightworksmn.org)

## 2024-2025 ACADEMIC COMPETITIONS



### Future City Competition

Grades 6-8

September 2024 - January 2025

**Regional Competition**

**January 2025**

Dakota County Technical College

Rate per school:

\$25

Aligns with Minnesota Academic Standards  
in Science, Math, Social Studies, and  
English Language Arts



### Middle Grades Knowledge Bowl

Grades 6-8

November 2024 - February 2025

Rates per team:

\$150 (Members\*)

\$300 (Non-Members)

Aligns with Minnesota Academic Standards  
in Science, Math, Social Studies, and  
English Language Arts



### Senior High Knowledge Bowl

Grades 9-12

December 2024 - March 2025

Rates per team:

\$265 (Members\*)

\$510 (Non-Members)

Tiered discount with additional teams

Aligns with Minnesota Academic Standards  
in Science, Math, Social Studies, and  
English Language Arts



### Twin Cities Regional Spelling Bee

Grades 4-8

March 2025

Fridley High School Auditorium

Rate per school:

\$175 (through Scripps)

Regional Bee with top 50 spellers

Rate per speller:

\$40 (Members\*)

\$80 (Non-Members)

Aligns with Minnesota Academic Standards  
in English Language Arts

\*SparkPath presents its programs in collaboration with BrightWorks.  
BrightWorks member districts/schools save 30%-50% on registration fees.  
Learn more about membership: [www.brightworksmn.org](http://www.brightworksmn.org)

# SparkPath

**OUR VISION:**  
Expand curiosity,  
confidence, and creativity  
in students.

SparkPath is a 501(c)(3) non-profit organization created by BrightWorks, a Minnesota Service Cooperative, to provide student enrichment programs. BrightWorks member districts/schools save 30%-50% on SparkPath registration fees. Learn more about membership at [www.brightworksmn.org](http://www.brightworksmn.org).

## Engaging Field Trips

Opportunities to learn from and with Minnesota professionals in our local arts, writing, and STEM communities

**CreativeCon** - Grades 5-8

**Creativity Festival** - Grades 3-5

**STEMLink** - Grades 5-6

**Young Authors Conference** - Grades 4-8

## Exciting Academic Competitions

Challenging experiences that emphasize academic excellence, leadership, healthy competition, good sportsmanship, and effective communication

**Future City Competition** - Grades 6-8

**Middle Grades Knowledge Bowl** - Grades 6-8

**Senior High Knowledge Bowl** - Grades 9-12

**Twin Cities Regional Spelling Bee** - Grades 4-8



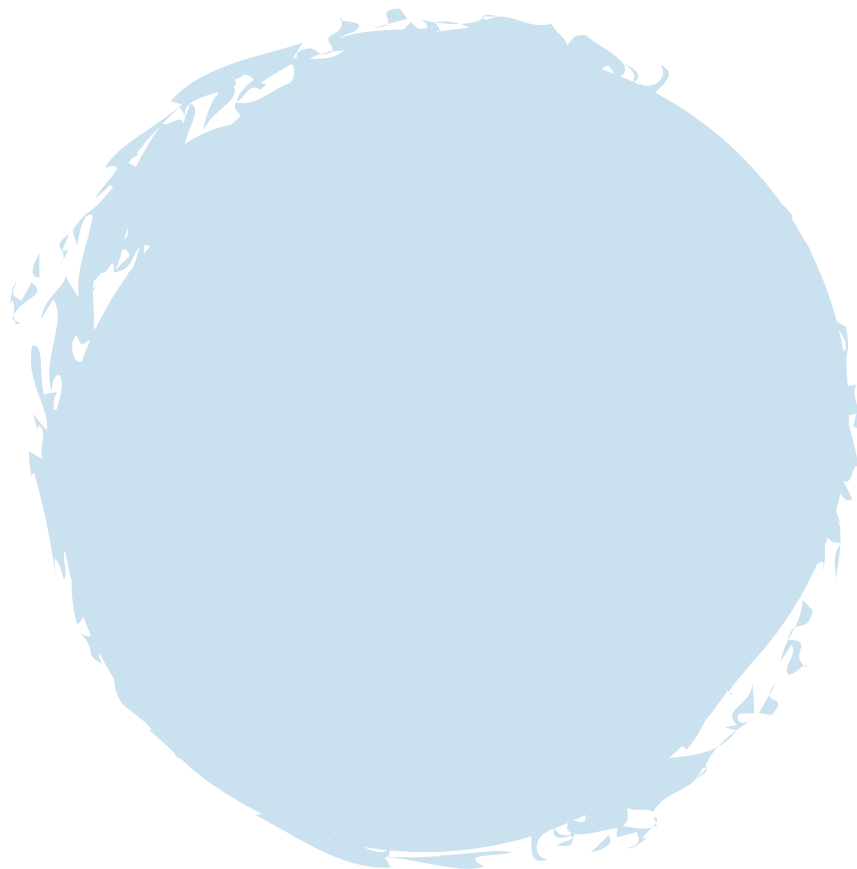
## 2024 Student & Teacher Testimonials

- I learned that being creative is your choice and you can express it in many ways.
- At STEMLink, I got to do a lot of cool stuff, I got to build/create, work with my team, achieve stuff, and so much more.
- Attending the Young Authors Conference made me a way better writer. PLEASE SEND ME BACK NEXT YEAR!
- My favorite Future City Competition memory is the time we worked in the maker space for two days. By the end we were so proud of ourselves and proud of each other.
- My favorite Knowledge Bowl memory is knowing the answers to a question and getting it right with confidence.
- Future City Competition is a wonderful event for students of varied interests and abilities to work together to research and present engineering solutions to actual city planning issues.



2 Pine Tree Drive, Suite 101  
Arden Hills, MN 55112  
[www.sparkpath.org](http://www.sparkpath.org)  
612-638-1500

  
**BrightWorks**  
A Minnesota Service  
Cooperative



[www.brightworksmn.org](http://www.brightworksmn.org)